

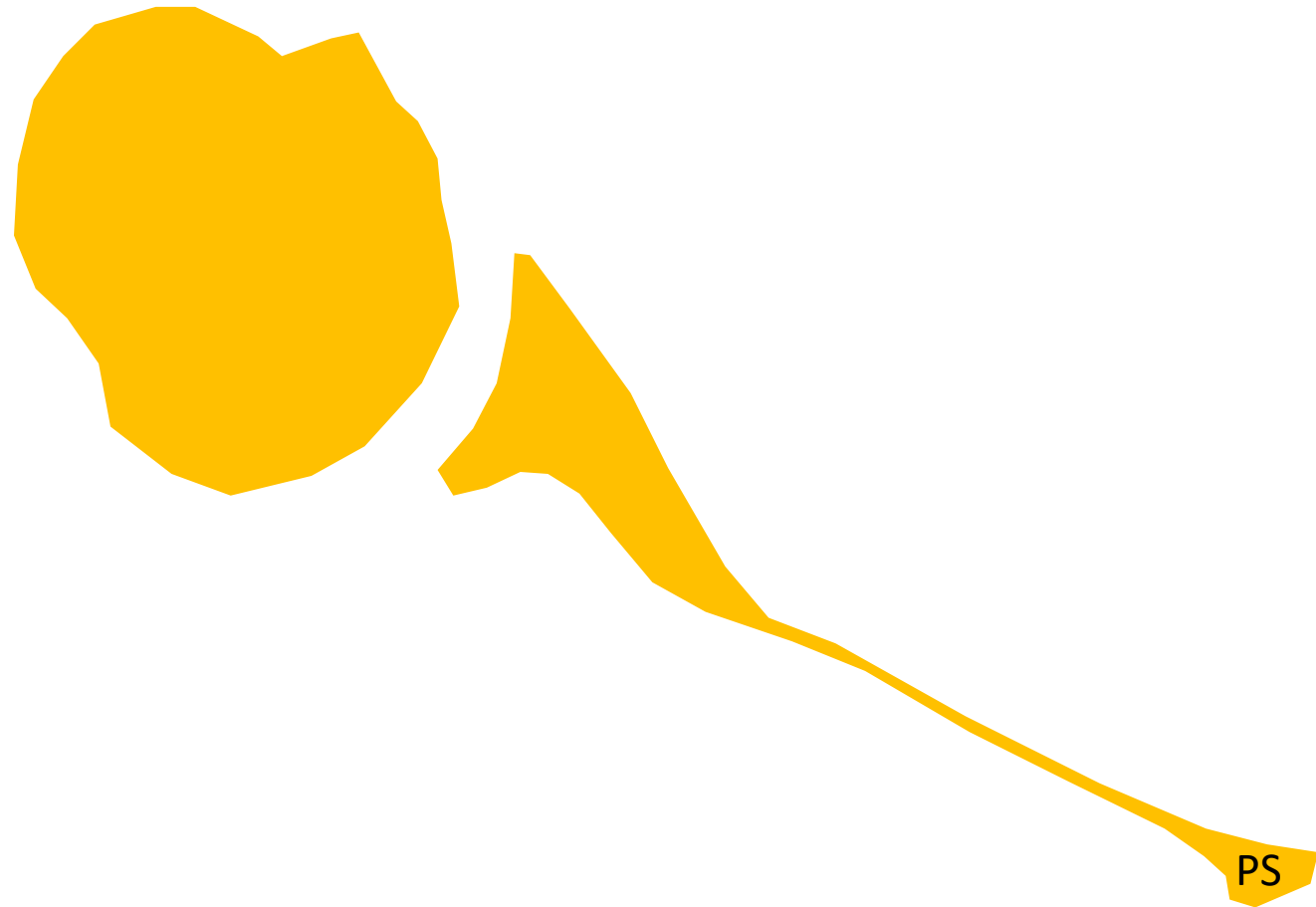


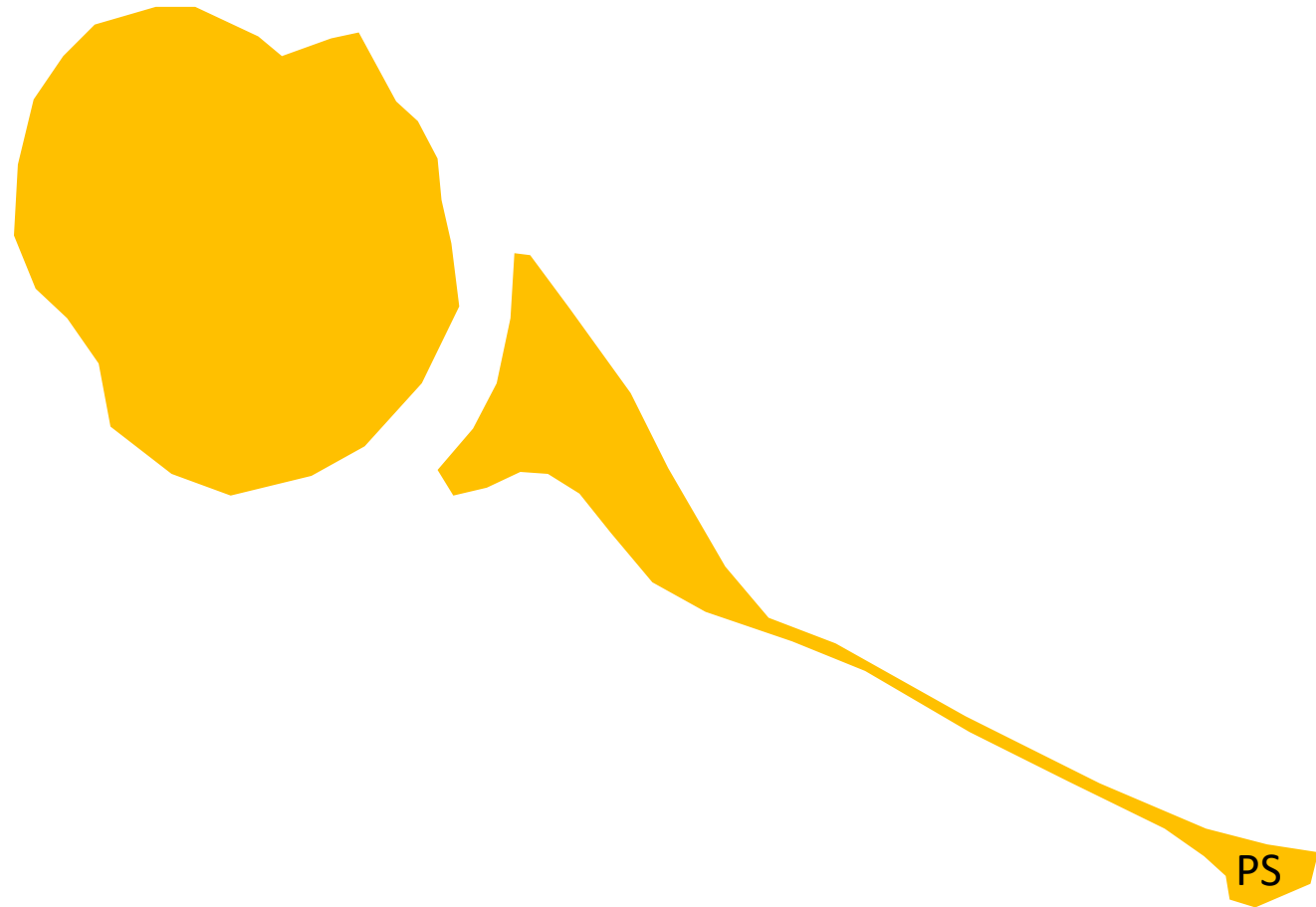
Posterior shoulder dislocation

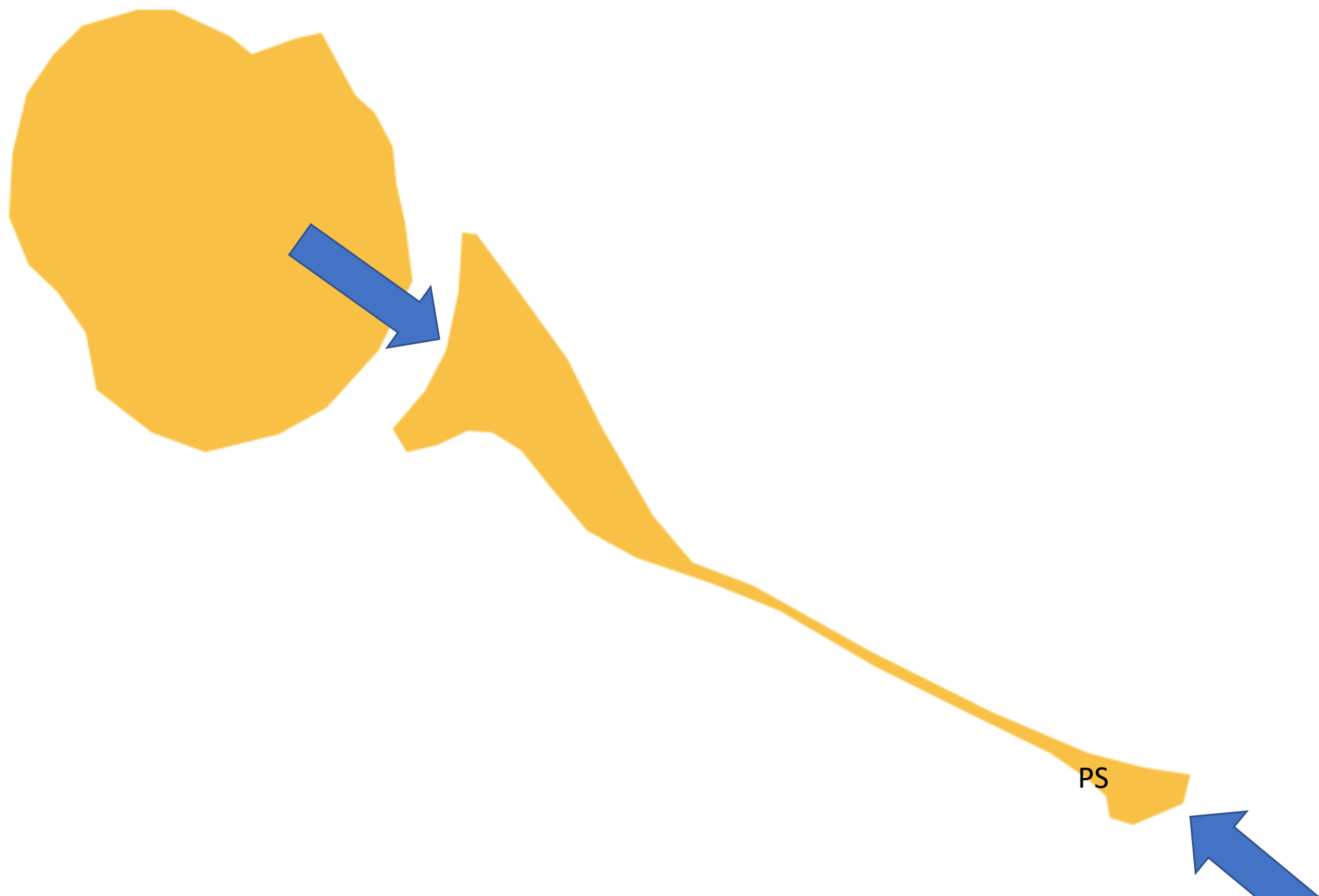
Pawel Szaro

Posterior shoulder dislocation

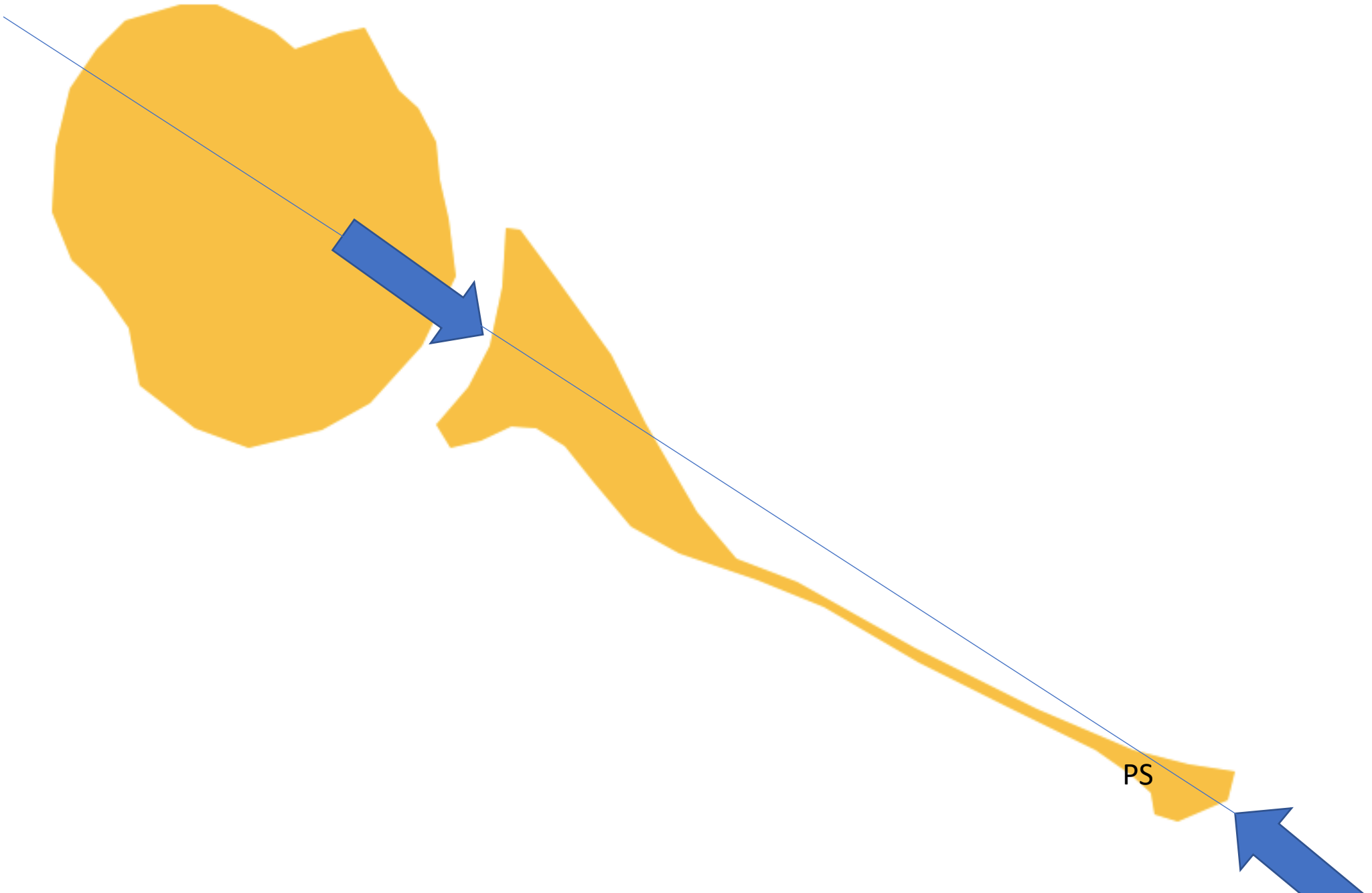
- is less common than anterior instability
- posterior dislocation generally is not the starting point of posterior instability as opposed to an anterior shoulder dislocation
- multidirectional shoulder instability or anatomic abnormalities involving the glenoid, humeral head, posterior capsule, and labrum, which can predispose to shoulder instability
- retroversion with respect to the scapular body ranging from 0 to 7 grades, superomedial to inferolateral ca 15 grades
- glenoid dysplasia
- posterior labral tears are less frequent in patients with posterior instability than anteroinferior labral tears in patients with anterior instability.



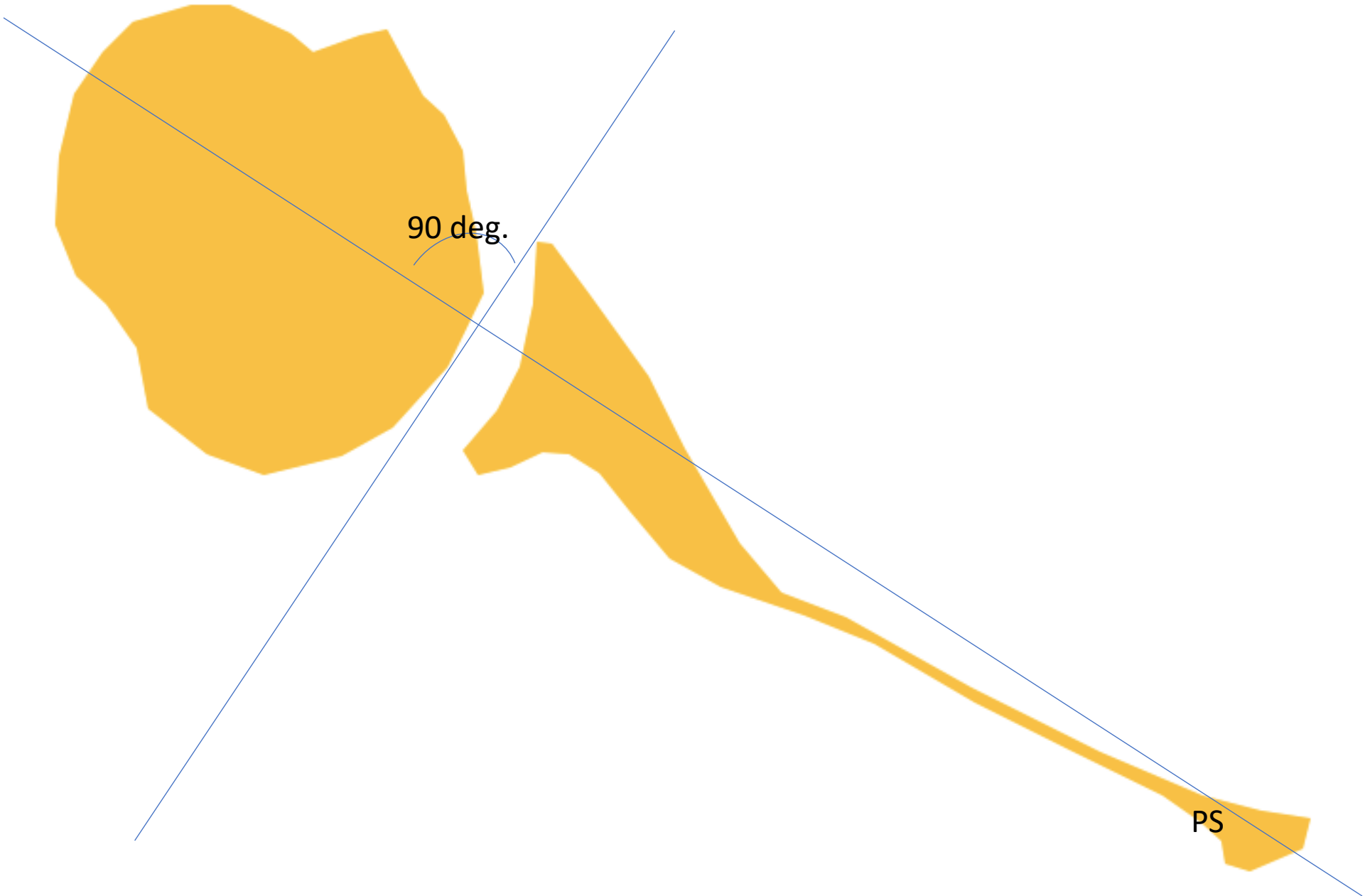




PS



PS



90 deg.

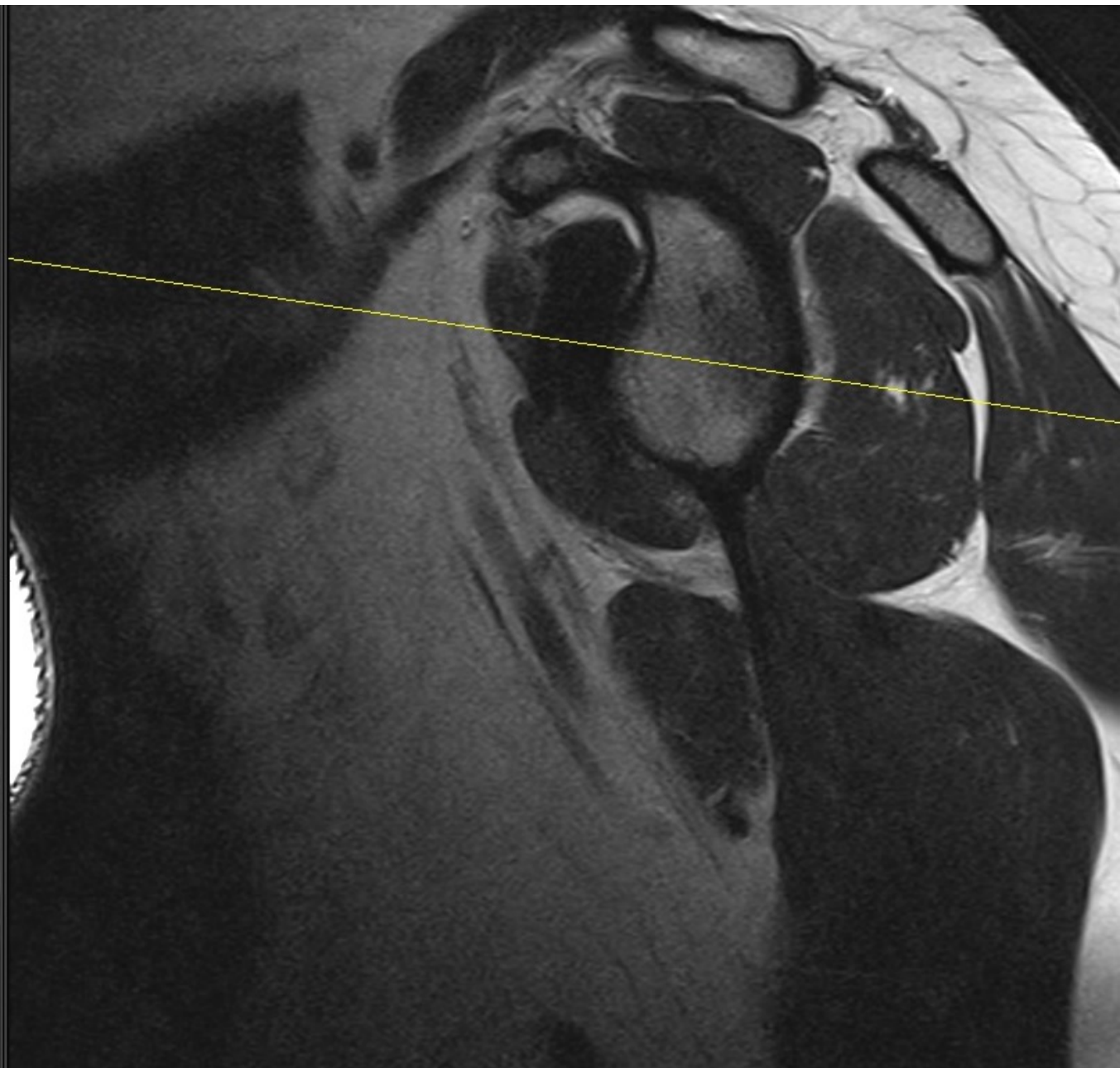
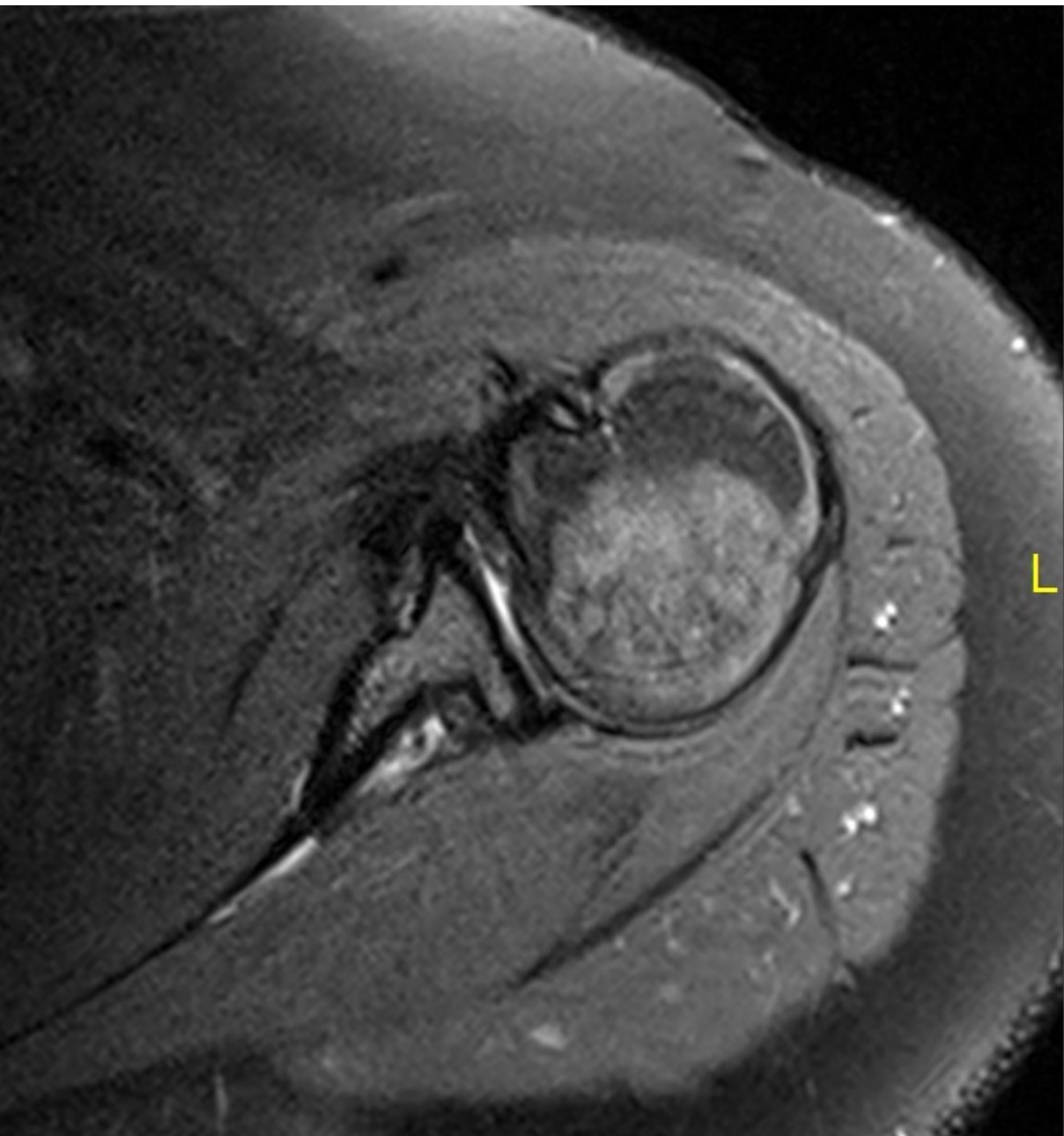
PS



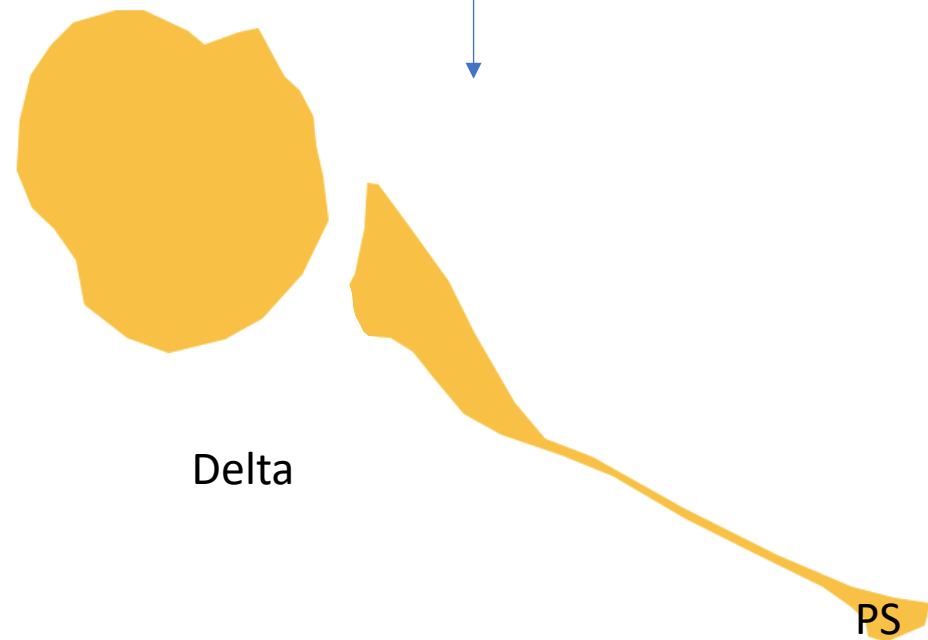
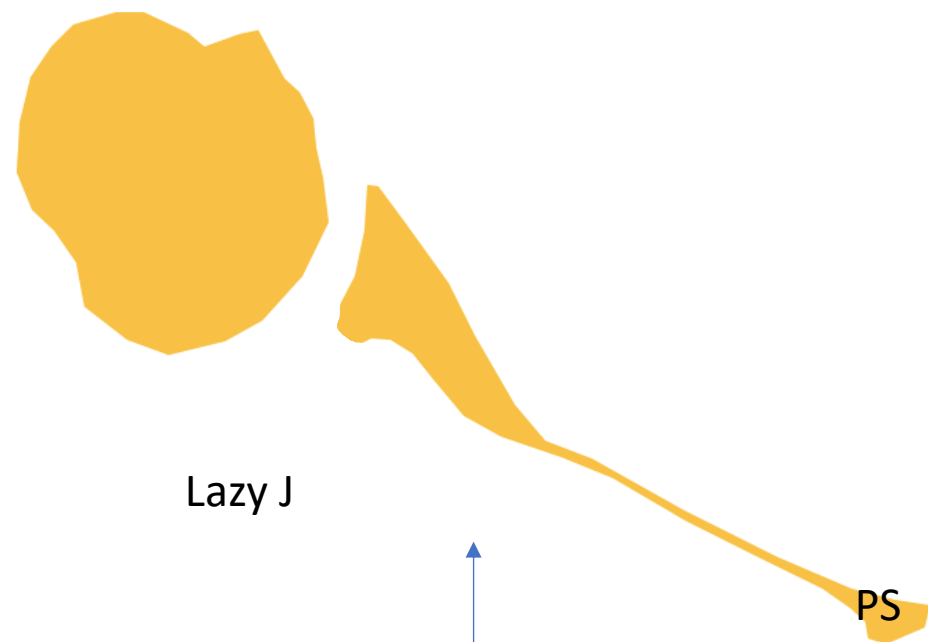
90 deg.

Glenoid version

PS



Glenoid dysplasia



Glenoid dysplasia

